

SPOC Forum

The Livery Climate Action Group

Monday 19th May



Every business can be a force for good

#GoodBusiness

Heart of the City

We are a charity that enables small and medium-sized businesses (SMEs) to create a positive impact in their communities and on the environment, whilst strengthening their businesses operations.



Every business can be a force for good

#GoodBusiness



Our impact

Since April 2024, we have:

- Supported **176 SMEs** to understand and embed responsible business and **social value** into their operations
- Worked with **150 SMEs** to start their **net zero** journey, resulting in a committed reduction of 134,000 tonnes of CO2e by 2050
- Supported **250 ethnic minority owned SMEs** in London to become **supplier ready** through Minority Business Matters, in partnership with MSDUK
- Partnered with **15 large organisations** to support SMES in their **value chain** and 40 more to open access to their supply chains



Every business can be a force for good

#GoodBusiness

Net Zero Definition

Net zero

- Scope 1, 2 and 3
- Reduce emissions
- Align to climate science
- Offset any unavoidable emissions, via removal offsets

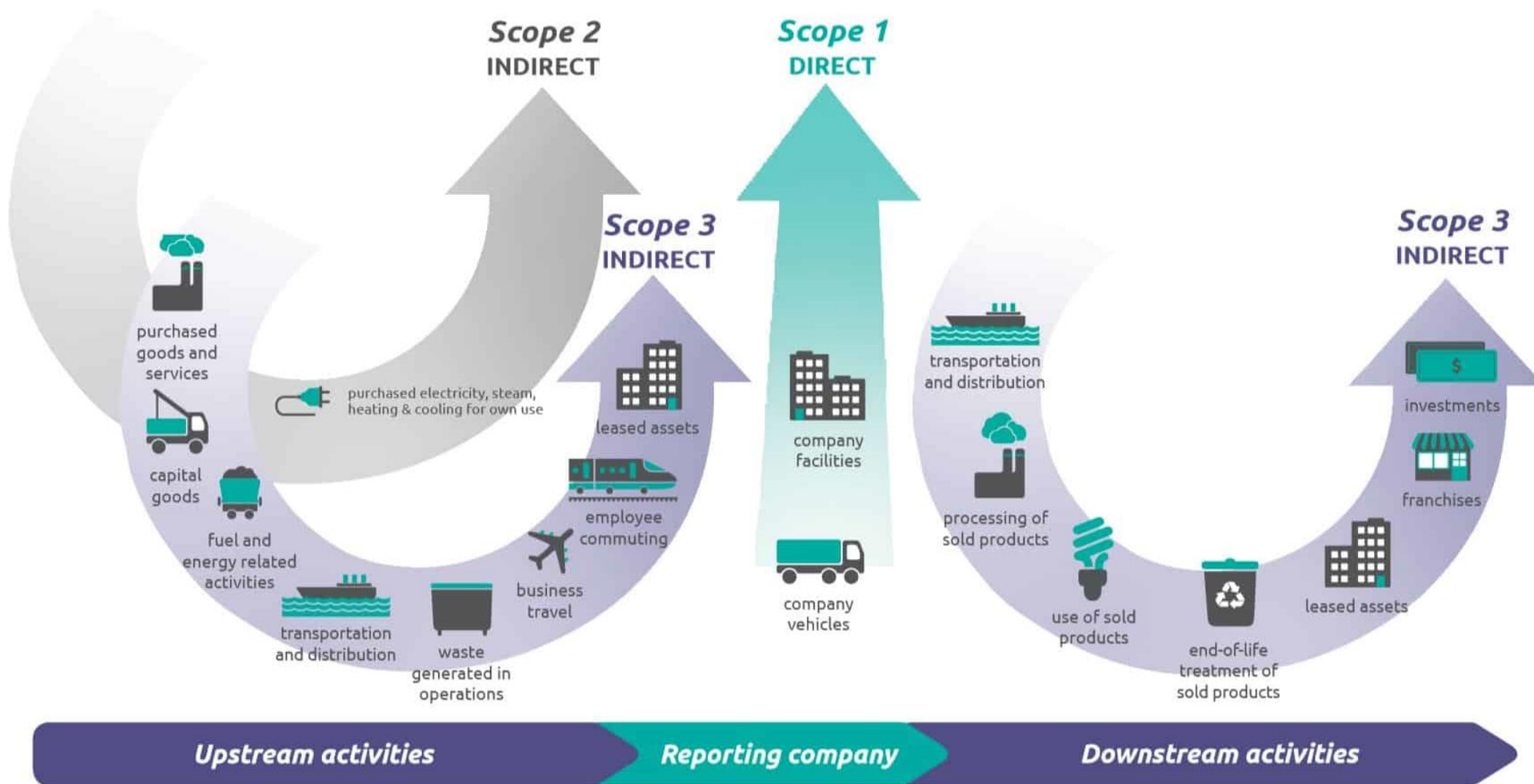
Carbon neutral

- No imposed scope
- Balance carbon emissions through offsetting
- Offset emissions via avoidance or removal offsets



Every business can be a force for good

#GoodBusiness



Every business can be a force for good

#GoodBusiness

What to measure

Scope 1

- Gas
- Company owned vehicles
- Refrigerants

Scope 2

- Electricity

Scope 3

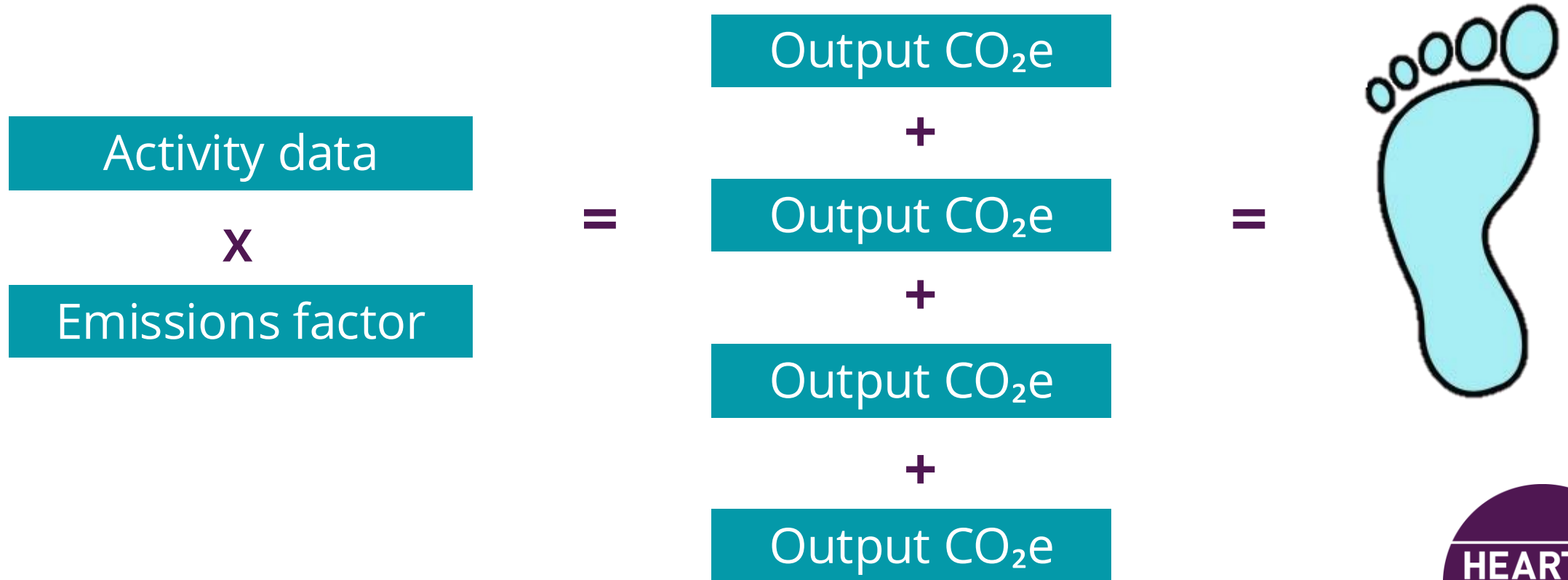
- Business travel
- Accommodation
- Employee commuting
- Water
- Waste
- Working from home
- Purchased services and goods

Every business can be a force for good

#GoodBusiness



Carbon Footprint Measurement



Every business can be a force for good

#GoodBusiness



Carbon Calculators



4 | Energy

ENERGY

Calculate and offset your energy use emissions here:

Energy Type: Electricity

Country: United Kingdom

Amount: 0 kWh

☐ Was this certified 100% renewable energy?

CARBON EMISSIONS

0.00 tonnes of CO₂e

ADD TO BASKET

Heart of the City Carbon Calculator -

	A	B	C	D
1		Value of goods and services purchased annually (£)	Emissions factor	Emissions in kg CO ₂ e
2	Purchased services		0.18	0
3	Purchased goods - standard office goods		0.63	0
4	Purchased goods - construction goods		0.71	0
5	Total purchased goods and services emissions kgCO ₂ e			0
6	Total purchased goods and services emissions tonnes CO ₂ e			0
7				
8				
9				
10	Purchased services examples:			
11	Employment, educational, insurance, telecoms, advertising, legal, postal, printing, publishing, accounting, consultant			
12				
13	Purchased goods - standard office goods examples:			
14	Computer and electronic goods, furniture, food, drink, stationery			
15				
16	Purchased goods - construction goods examples:			
17	Construction materials and machinery			



Every business can be a force for good

#GoodBusiness

Working towards Net Zero

- Mixture of quick wins and longer-term actions
- Significance of behavioral change
- Transparency and consistency
- Don't let perfection be the enemy of progress
- You aren't alone on your sustainability journey



Every business can be a force for good

#GoodBusiness

Offsetting

Avoidance offsets

- Renewable energy infrastructure
- Cookstove projects
- Waste to energy facilities

- ~ £9.70 / tonne

Removal offsets

- Tree planting
- Permanent Carbon Capture (PCC)
- Carbon Capture and Storage (CCS)
- Carbon Dioxide Removal (CDR)

- ~ £10 / tonne CO₂e
- ~ £100 - £1000 / tonne CO₂e



Every business can be a force for good

#GoodBusiness